



Atmospheric Correction of Ocean Color RS Observations

Menghua Wang

NOAA/NESDIS/STAR

E/RA3, Room 102, 5200 Auth Rd.

Camp Springs, MD 20746, USA

IOCCG Summer Lecture Series, Villefranche-sur-Mer, France, July 2-14, 2012

Acknowledgements: I thank for satellite data from various missions, e.g., SeaWiFS, MODIS, and VIIRS, etc., in situ data from SeaBASS (from various Pls) and some other databases. Some slides are from Howard Gordon. I thank for various contributions from postdocs, research associates, and colleagues.



Menghua Wang, IOCCG Lecture Series--Atmospheric Correction

Lecture Outlines (1)

1. Introduction
 - Brief history
 - Basic concept of ocean color measurements
 - Why need atmospheric correction
2. Radiometry and optical properties
 - Basic radiometric quantities
 - Apparent optical properties (AOPs)
 - Inherent optical properties (IOPs)
3. Optical properties of the atmosphere
 - Molecular absorption and scattering
 - Aerosol properties and models
 - Non- and weakly absorbing aerosols
 - Strongly absorbing aerosols (dust, smoke, etc.)
4. Radiative Transfer
 - Radiative Transfer Equation (RTE)
 - Successive-order-of-scattering method
 - Single-scattering approximation

Lecture Outlines (2)

5. Atmospheric Correction

- Define reflectance and examine the various terms
- Sea surface effects
- Atmospheric diffuse transmittance
- Normalized water-leaving radiance
- Single-scattering approximation
- Aerosol multiple-scattering effects
- Open ocean cases: using NIR bands for atmospheric correction
- Coastal and inland waters
 - Brief overviews of various approaches
 - The SWIR-based atmospheric correction
- Examples from MODIS-Aqua measurements

6. Addressing the strongly-absorbing aerosol issue

- The issue of the strongly-absorbing aerosols
- Some approaches for dealing with absorbing aerosols
- Examples of atmospheric correction for dust aerosols using MODIS-Aqua and CALIPSO data

7. Requirements for future ocean color satellite sensors

8. Summary

IOCCG Report #10 at http://www.ioccg.org/reports_ioccg.html
“Atmospheric Correction for Remotely-Sensed Ocean Colour
Products”.

Reference citations from my presentation can be found from the
report.

Introduction

1. Introduction

- Brief history
- Basic concept of ocean color measurements
- Why need atmospheric correction



Brief History

- Color photographs of the oceans were obtained from spacecraft (Apollo, etc., 1960's).
- Clarke et al. (1970) showed the systematic measurements of radiance spectra of sea (ocean color) from aircraft, demonstrated the possibility of detecting the chlorophyll concentration within the ocean upper layers. They also showed atmospheric effects on the measured signals.
- Tyler & Smith (1970) performed field measurements of upward & downward irradiance spectra in different water bodies. Thereafter, many similar in situ water optical measurements.
- Interpretation of in situ reflectance measurements was given in the frame of *radiative transfer* by Gordon *et al.* (1975) and also in terms of optically-significant water substances by Morel and Prieur (1977) and Smith and Baker (1978).
- Gordon (1978; 1980) developed a single-scattering atmospheric correction algorithm for processing the NASA CZCS ocean color data, demonstrating the feasibility of satellite ocean color remote sensing.
- Advanced atmospheric correction algorithm (Gordon and Wang, 1994) has been developed for various more sophisticated ocean color satellite sensors, e.g., SeaWiFS, OCTS, MODIS, MERIS, etc., following the successful CZCS proof of concept mission.
- In recent years, atmospheric correction effort has been on dealing with more complex water properties in coastal and inland waters, as well as strongly-absorbing aerosols.

Satellite Ocean Color Measurements

Satellite ocean color remote sensing is possible because

- Ocean color (spectral radiance/reflectance) data--water-leaving radiance/reflectance spectra--can be related to water properties, e.g., chlorophyll-a concentration. In other words, there exist various relationships between water optical property and water biological / biogeochemical et al. properties.
- It is possible to carry out atmospheric correction for deriving accurate water radiance/reflectance spectra data from satellite measurements.

Ocean Color Spectra



Lake Taihu



Chesapeake Bay

Satellite-Measured Reflectance (Radiance)

$$\rho_t(\lambda) = \underbrace{\rho_r(\lambda)}_{\text{Rayleigh}} + \underbrace{\rho_A(\lambda)}_{\text{Aerosols}} + \underbrace{t(\lambda)t_0(\lambda)}_{\text{Transmittance}} \underbrace{[\rho_w(\lambda)]_N}_{\text{Ocean}}$$

Satellite-Measured Ocean Contribution

$$\rho(\lambda) = \pi L(\lambda) / \mu_0 F_0(\lambda)$$

$$\rho_{path}(\lambda) = \rho_r(\lambda) + \underbrace{\rho_A(\lambda)}_{\rho_a(\lambda) + \rho_{ra}(\lambda)}$$

Normalized water-leaving radiance:

$$[L_w(\lambda)]_N, nL_w(\lambda) \quad \text{mW cm}^{-2} \mu\text{m}^{-1} \text{str}^{-1}$$

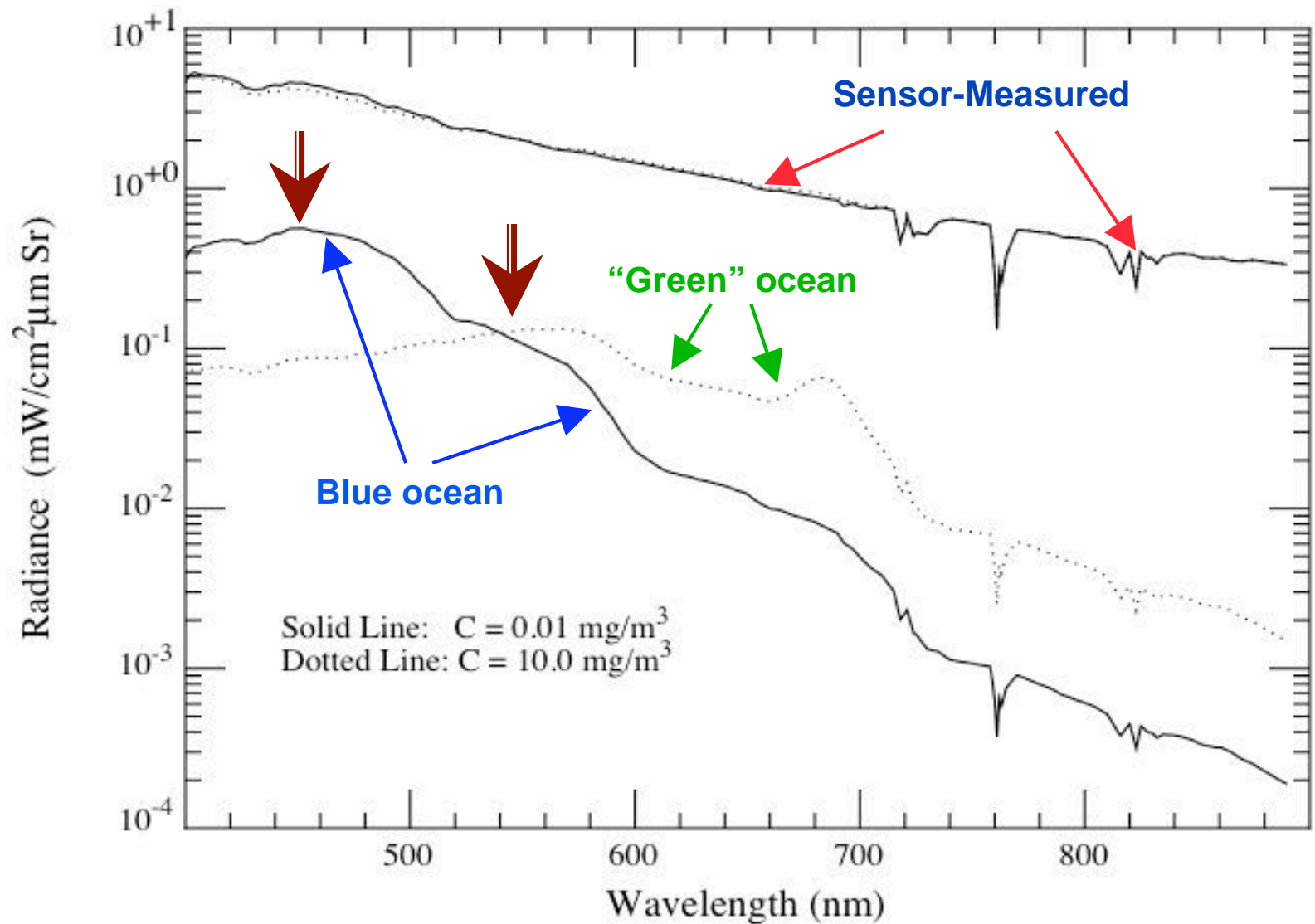
Normalized water-leaving reflectance:

$$[\rho_w(\lambda)]_N, \rho_{wN}(\lambda) \quad \text{unitless}$$

Remote sensing reflectance:

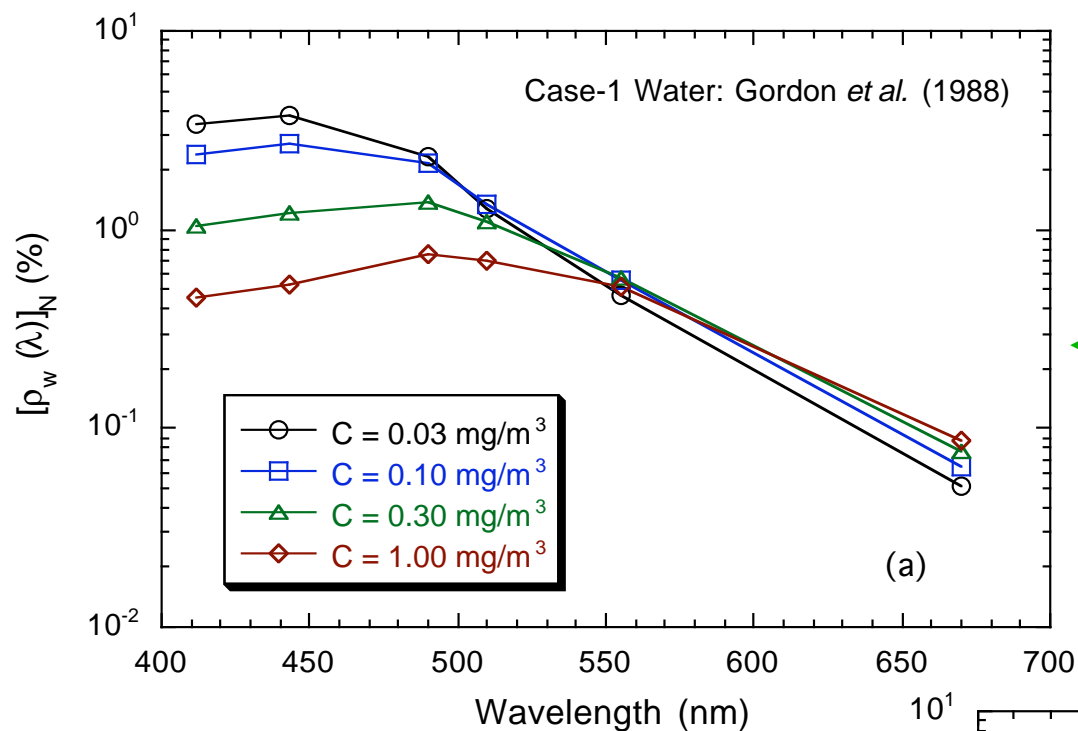
$$R_{rs}(\lambda) = \rho_{wN}(\lambda) / \pi \quad \text{str}^{-1}$$

Ocean Color Remote Sensing



- Atmospheric Correction (removing >90% sensor-measured signals)
- Calibration (0.5% error in TOA >>> 5% in surface)

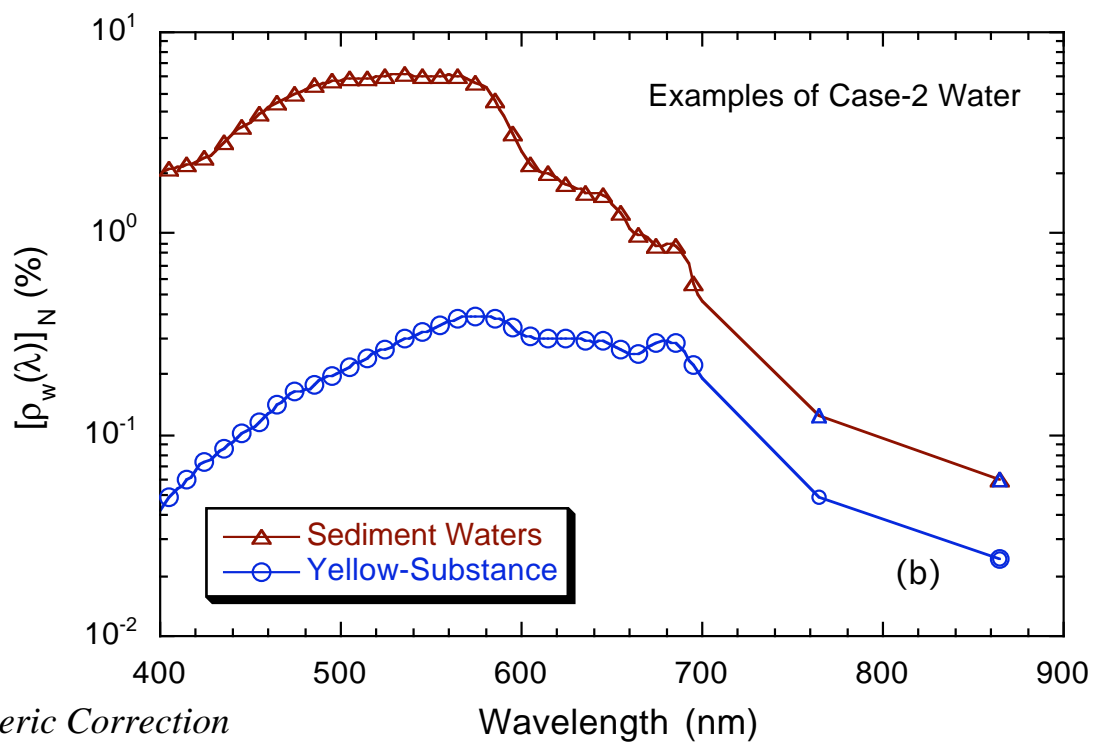
From H. Gordon



Ocean Contributions:
Case-1 Waters



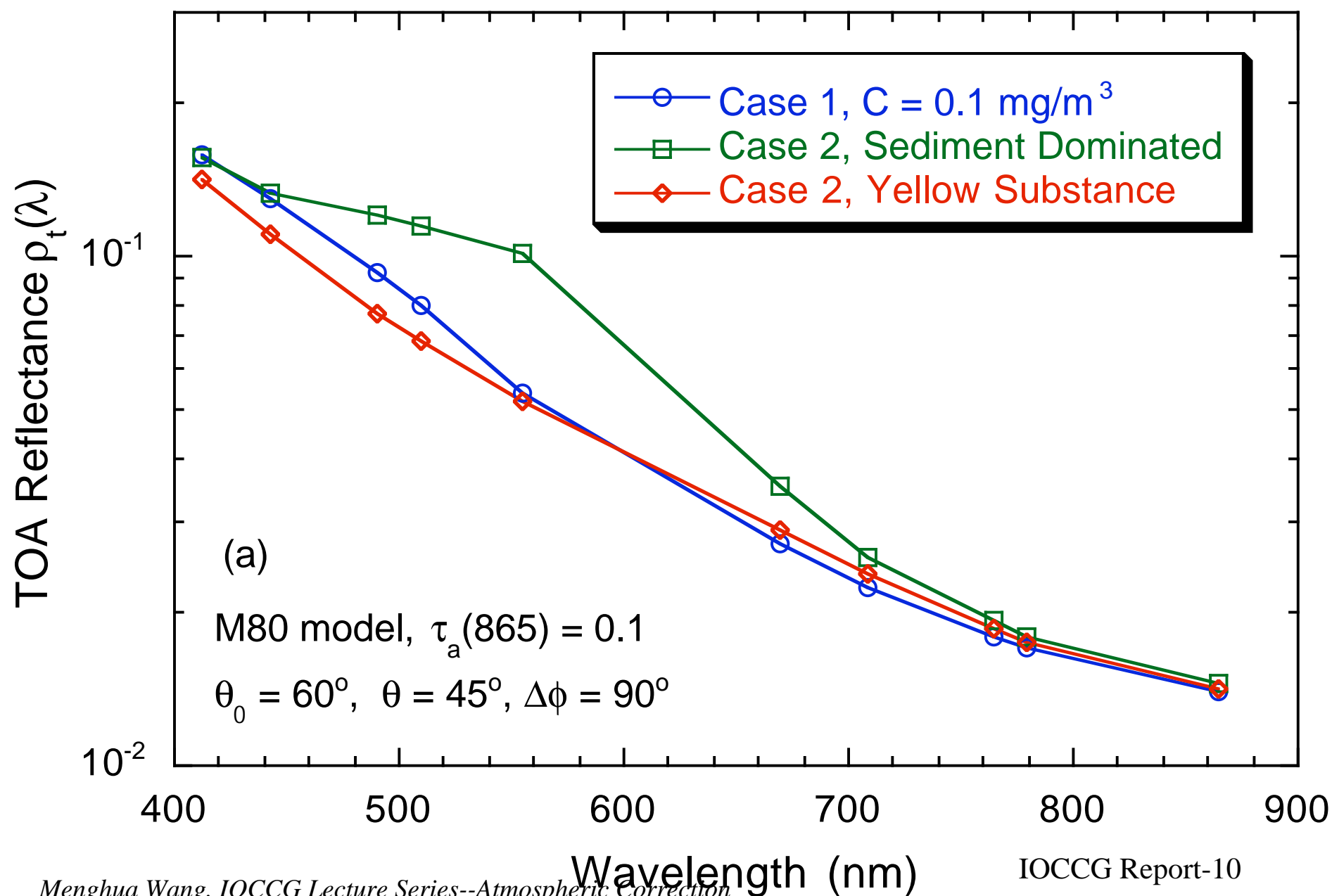
Ocean Contributions:
Case-2 Waters



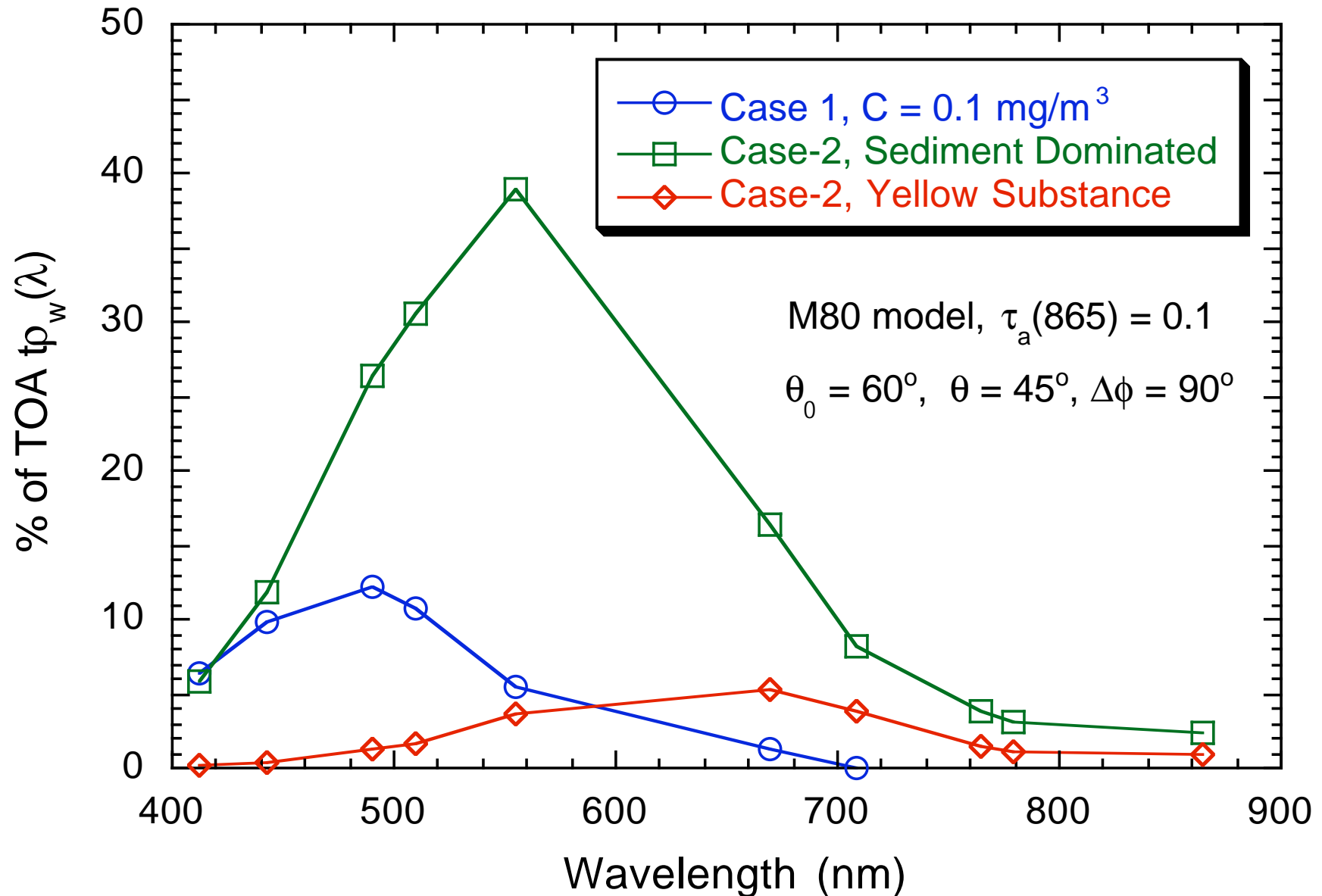
IOCCG Report-10

Menghua Wang, IOCCG Lecture Series--Atmospheric Correction

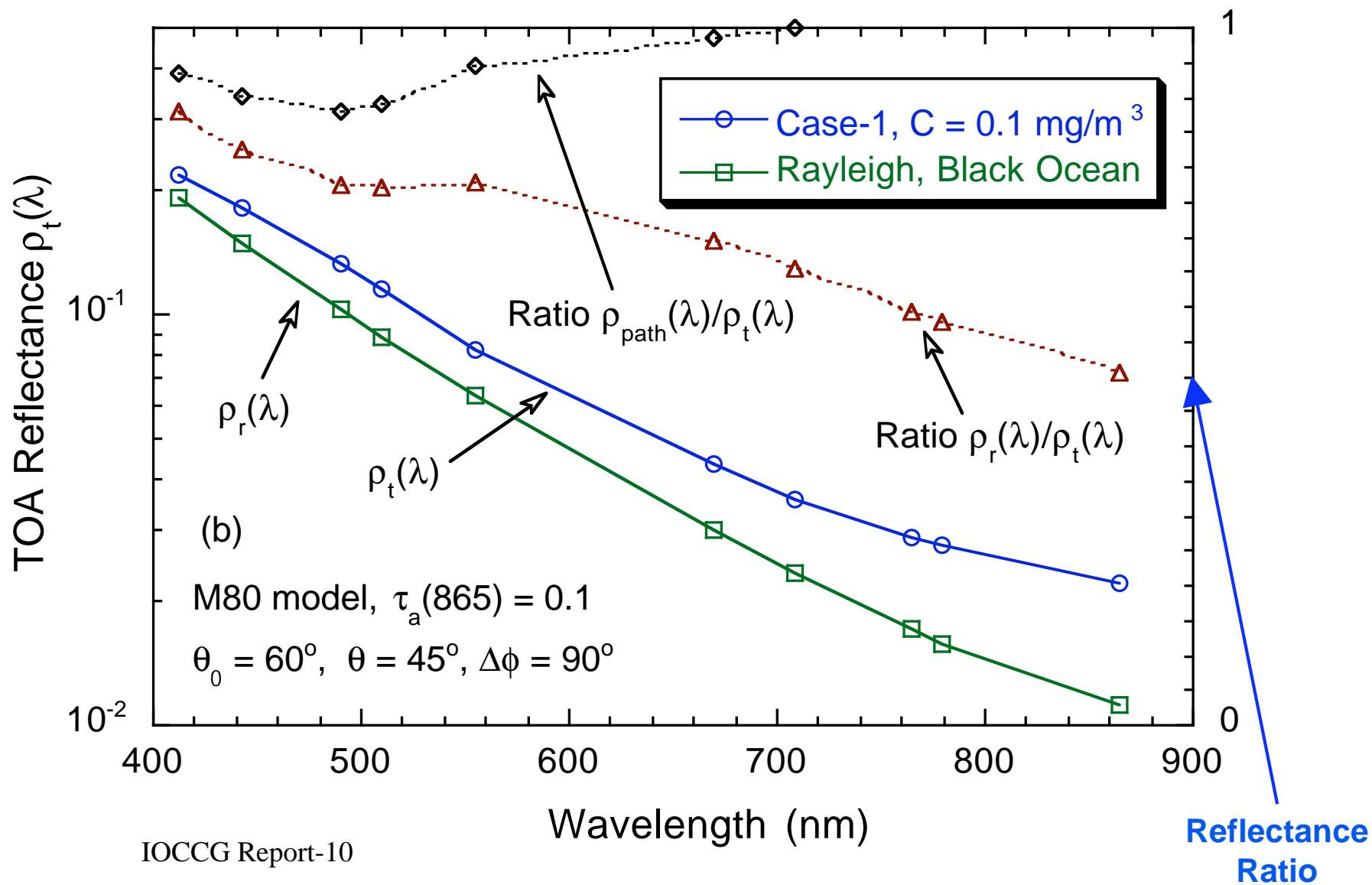
Satellite Sensor Measured TOA Reflectance Spectra



The TOA Ocean Contributions

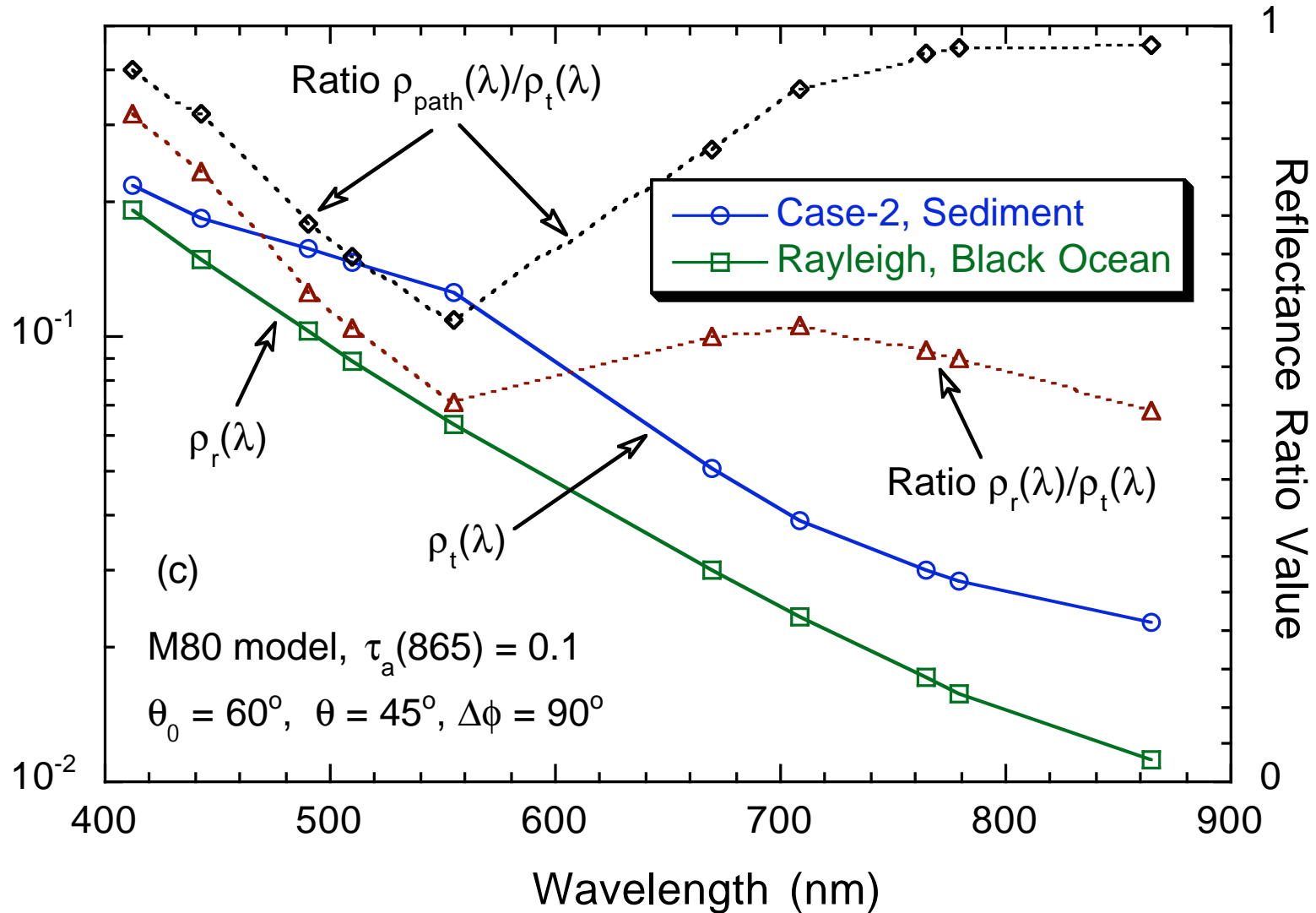


Ocean TOA Radiance Contributions for Case-1 Waters



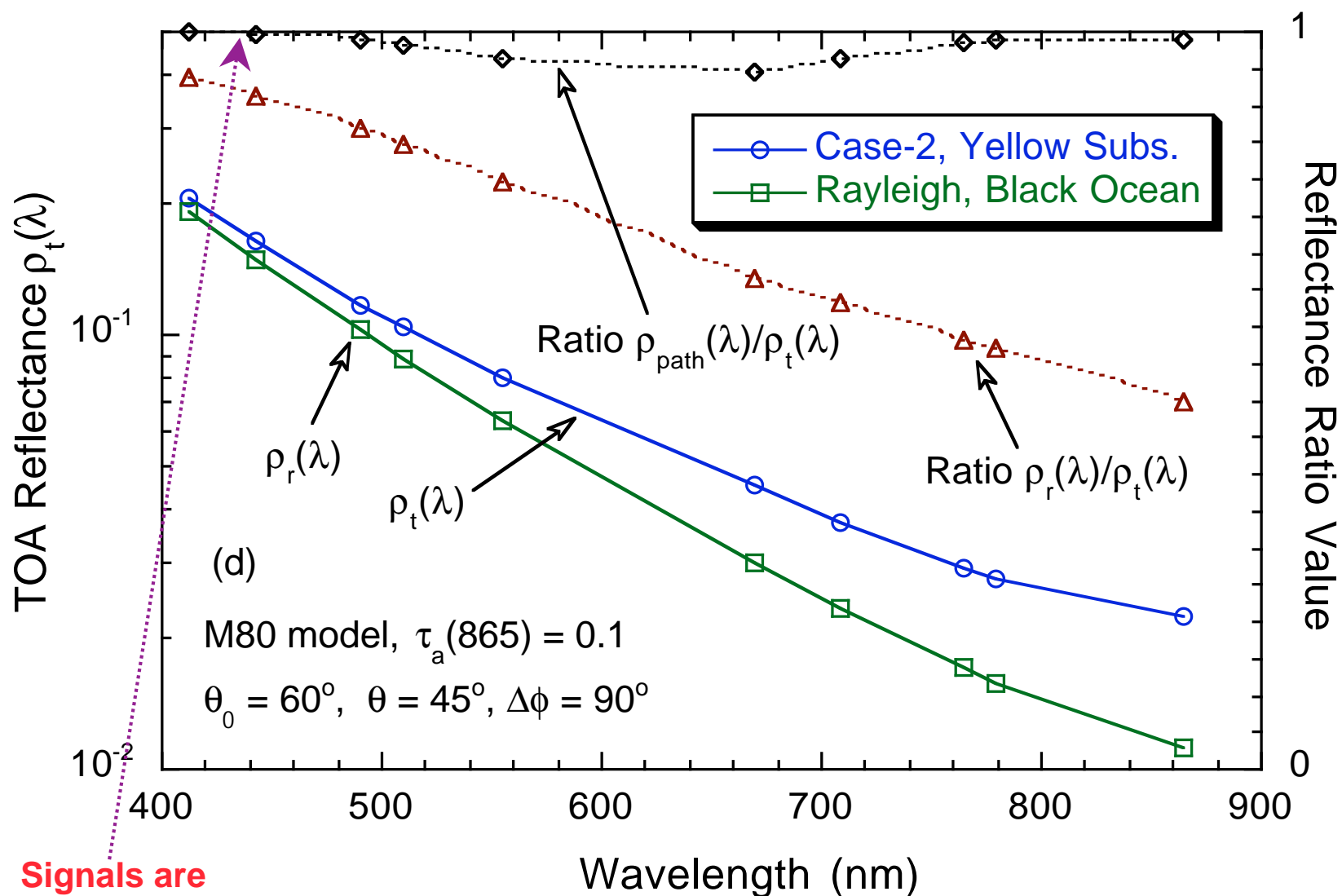
For a typical **Case-1** (open ocean) water:
Satellite-Measured water-leaving reflectance
contributions at the TOA are 6.4%, 9.8%, 12.1%,
10.8%, 5.5%, and 1.3% at wavelengths of 412, 443,
490, 510, 555, and 670 nm.

Ocean TOA Radiance Contributions for Sediment-type Case-2 Waters



For a typical **sediment-dominated** water:
Satellite-Measured water-leaving reflectance
contributions at the TOA are 5.8%, 11.2%, 26.3%,
30.6%, 39.0%, 16.4%, 3.7%, and 2.4% at wavelengths
of 412, 443, 490, 510, 555, 670, 765, and 865 nm.

Ocean TOA Radiance Contributions for Yellow Substance-type Case-2 Waters



Signals are
very small

For a **yellow-substance-dominated** water:
Satellite-Measured water-leaving reflectance
contributions at the TOA are **0.2%, 0.4%, 1.2%, 1.7%,
3.6%, 5.3%, 1.2%, and 1.0%** at wavelengths of 412,
443, 490, 510, 555, 670, 765, and 865 nm.

It is very difficult to do atmospheric correction at the
blue bands.

Atmospheric Correction

At satellite altitude

~**90%** of sensor-measured signal over ocean comes from the **atmosphere & surface!**

Factor of **1:10** from TOA to the surface

- It is crucial to have accurate **atmospheric correction** and **sensor calibrations**.
- **0.5%** error in atmospheric correction or calibration corresponds to possible of ~**5%** error in the derived ocean water-leaving radiance.
- We need ~**0.1%** sensor calibration accuracy.

Ocean Color Remote Sensing: Derive the ocean water-leaving radiance spectra by accurately removing the atmospheric and surface effects.

Ocean properties: e.g., chlorophyll-a concentration, diffuse attenuation coefficient at 490 nm, can be derived from the ocean water-leaving radiance spectra.

References

- Austin, R. W. (1974), The remote sensing of spectral radiance from below the ocean surface, in *Optical Aspects of Oceanography*, edited by N. G. Jerlov and E. S. Nielsen, pp. 317-344, Academic, San Diego, Calif.
- Bricaud, A., and A. Morel (1987), Atmospheric correction and interpretation of marine radiances in CZCS imagery: use of a reflectance model, *Oceanologica Acta*, *SP*, 33-50.
- Clarke, G. K., G. C. Ewing, and C. J. Lorenzen (1970), Spectra of backscattered light from the sea obtained from aircraft as a measure of chlorophyll, *Science*, *167*, 1119-1121.
- Gordon, H. R., O. B. Brown, and M. M. Jacobs (1975), Computed relationship between the inherent and apparent optical properties of a flat homogeneous ocean, *Appl. Opt.*, *14*, 417-427.
- Gordon, H. R. (1978), Removal of atmospheric effects from satellite imagery of the oceans, *Appl. Opt.*, *17*, 1631-1636.
- Gordon, H. R. (1980), A preliminary assessment of the NIMBUS-7 CZCS atmospheric correction algorithm in a horizontally inhomogeneous atmosphere, in *Oceanography from Space*, edited by J. F. R. Gower, pp. 281-294, Plenum Press, New York and London.
- Gordon, H. R., and D. K. Clark (1981), Clear water radiances for atmospheric correction of coastal zone color scanner imagery, *Appl. Opt.*, *20*, 4175-4180.
- Gordon, H. R., and A. Morel (1983), *Remote assessment of ocean color for interpretation of satellite visible imagery: A review*, 114 pp., Springer-Verlag, New York.
- Gordon, H. R., and M. Wang (1994), Retrieval of water-leaving radiance and aerosol optical thickness over the oceans with SeaWiFS: A preliminary algorithm, *Appl. Opt.*, *33*, 443-452.
- Morel, A. (1980), In-water and remote measurements of ocean color, *Boundary-layer Meteorology*, *18*, 177-201.
- Morel, A., and L. Prieur (1977), Analysis of variations in ocean color, *Limnol. Oceanogr.*, *22*, 709-722.
- Smith, R. C., and K. S. Baker (1978), The bio-optical state of ocean waters and remote sensing, *Limnol. Oceanogr.*, *23*, 247-259.
- Smith, R. C., and W. H. Wilson (1981), Ship and satellite bio-optical research in the California Bight, in *Oceanography from Space*, edited by J. F. R. Gower, pp. 281-294, Plenum Press, New York and London.
- Tyler, J. E., and R. C. Smith (1970), *Measurements of spectral irradiance underwater*, 103 pp., Gordon and Breach Science Publishers.

Radiometry and Optical Properties

2. Radiometry and optical properties

- Basic radiometric quantities
- Apparent optical properties (AOPs)
- Inherent optical properties (IOPs)



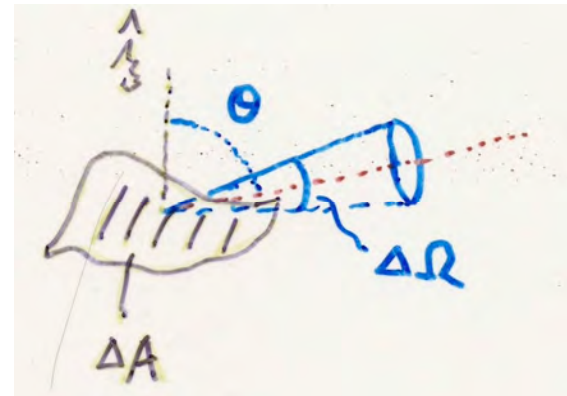
Apparent Optical Properties

Radiant Power:

$$P(\lambda) = N \frac{hc}{\lambda} / t = \text{Energy} / t \quad N - \# \text{ of photons}$$

Definition of Radiance L :

$$L(\lambda) = \frac{\Delta^2 P(\lambda)}{\cos \theta \Delta \Omega \Delta A}$$

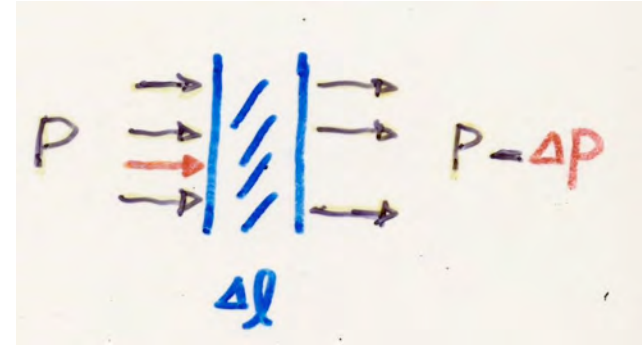


Radiance is Apparent Optical Property (**AOP**).
Ocean color sensors measure Radiance!

Inherent Optical Properties (IOPs) (1)

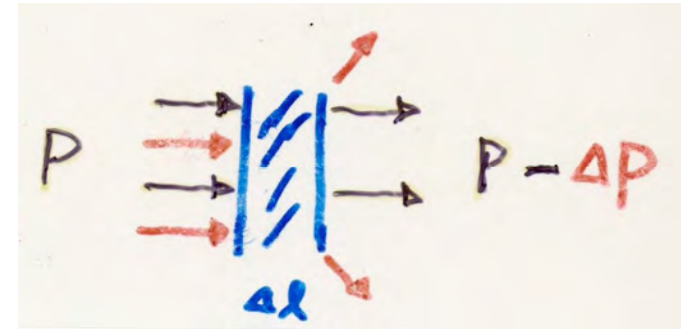
Absorption coefficient a :

$$a(\lambda) = \frac{\Delta P(\lambda)}{P(\lambda) \Delta l}$$



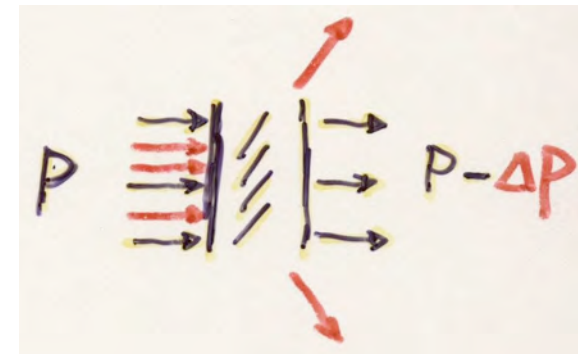
Scattering coefficient b :

$$b(\lambda) = \frac{\Delta P(\lambda)}{P(\lambda) \Delta l}$$



Extinction coefficient c :

$$c(\lambda) = \frac{\Delta P(\lambda)}{P(\lambda) \Delta l} = a(\lambda) + b(\lambda)$$

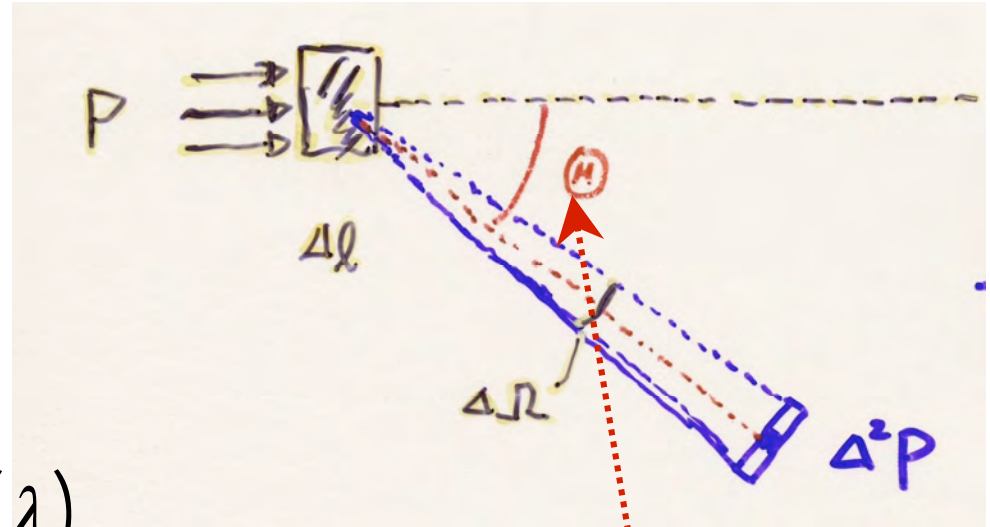


Inherent Optical Properties (IOPs) (2)

Volume Scattering Function:

$$\beta(\Theta) = \frac{\Delta^2 P(\lambda)}{P(\lambda) \Delta\Omega \Delta l}$$

$$\int_{4\pi} \beta(\Theta) d\Omega = \frac{\Delta P(\lambda)}{P(\lambda) \Delta l} \equiv b(\lambda)$$



Scattering phase function P :

$$P(\Theta) = \frac{\beta(\Theta)}{b}$$

Single-Scattering Albedo

The **single scattering albedo** is a dimensionless parameter which represents the percentage of photons being scattered in the single scattering case:

$$\omega_0(\lambda) = \frac{b(\lambda)}{c(\lambda)}$$

Optical Thickness (e.g., aerosol optical thickness (AOT), Rayleigh optical thickness, cloud optical thickness, etc.)

$$\tau(\lambda) = \int_0^Z c(z', \lambda) dz'$$

Optical Properties of the Atmosphere

3. Optical properties of the atmosphere

- Molecular absorption and scattering
- Aerosol properties and models
 - Non- and weakly absorbing aerosols
 - Strongly absorbing aerosols (dust, smoke, etc.)



Molecular (Rayleigh) Scattering

- The scattering of air molecules is purely electric dipole in character.
- The scattering phase function is symmetry, i.e., equal amounts of radiance are scattered into the forward and backward directions.
- The amount of scattered radiance varies nearly as the inverse fourth power of wavelength (blue sky).

Molecular (Rayleigh) Scattering

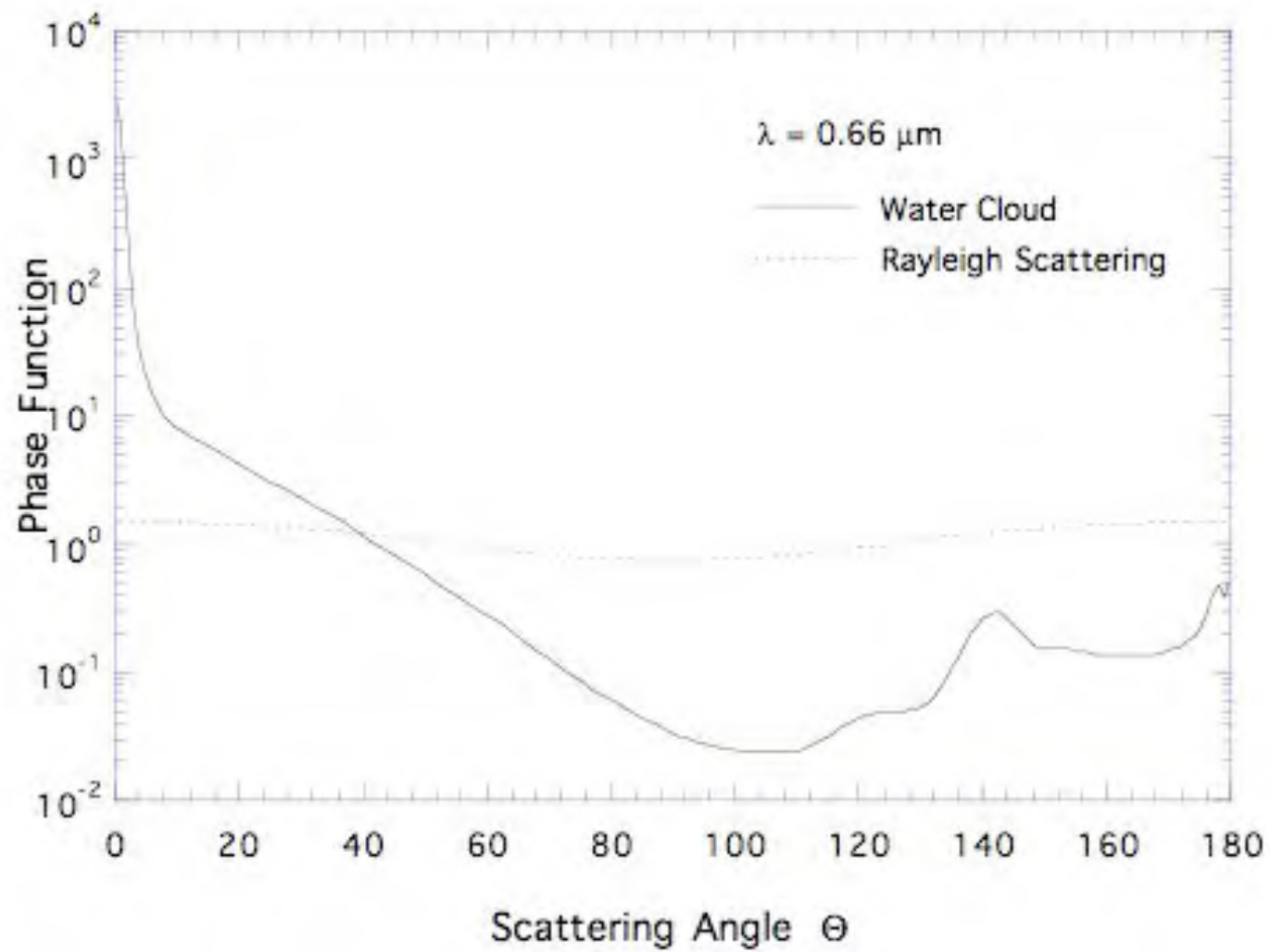
Rayleigh Phase Function: $P_r(\Theta) \propto 1 + \cos^2 \Theta$

The Rayleigh optical thickness is (Hansen & Travis, 1974):

$$\tau_r(\lambda, P_0) = 0.008569 \lambda^{-4} \left(1 + 0.0113 \lambda^{-2} + 0.00013 \lambda^{-4} \right)$$

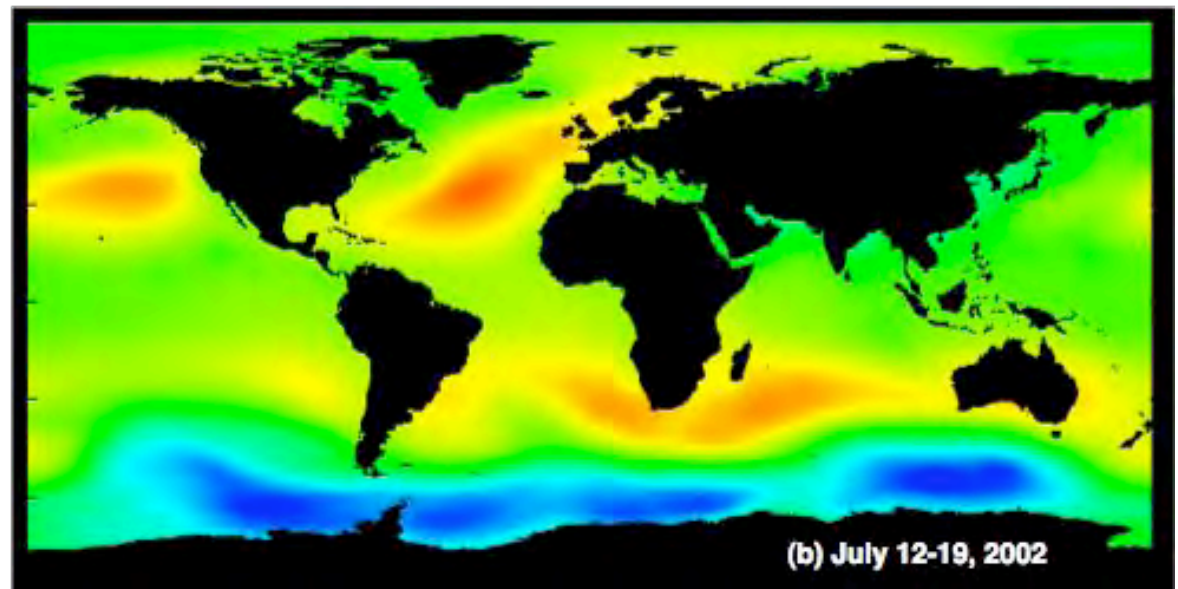
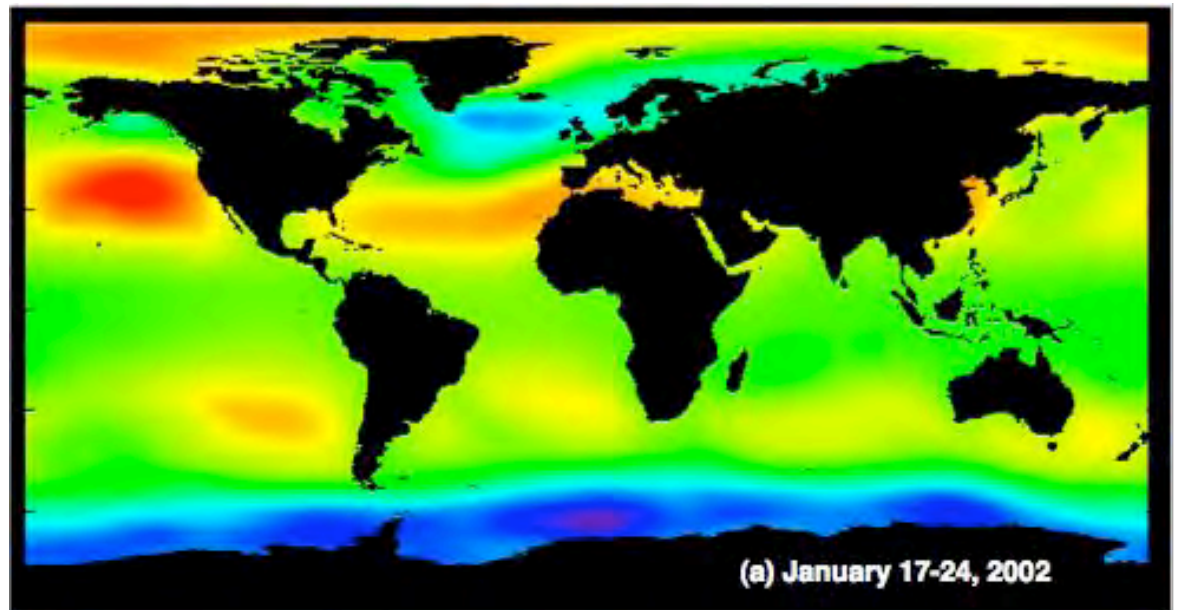
P_0 is the standard atmospheric pressure of 1013.25 hPa, and for a pressure P ,

$$\tau_r(\lambda, P) = \tau_r(\lambda, P_0) \frac{P}{P_0}$$



Atmospheric Pressure Variation

Usually, it is within
 $\sim \pm 3\%$



Atmospheric Pressure (hPa)

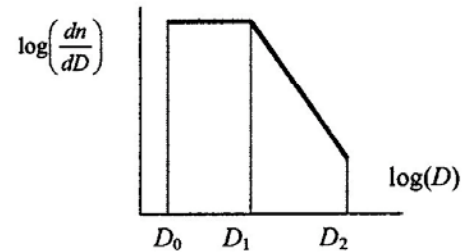
Aerosol Size Distributions

Size Distribution: $dn(D)$ = number/volume between D and $D + dD$

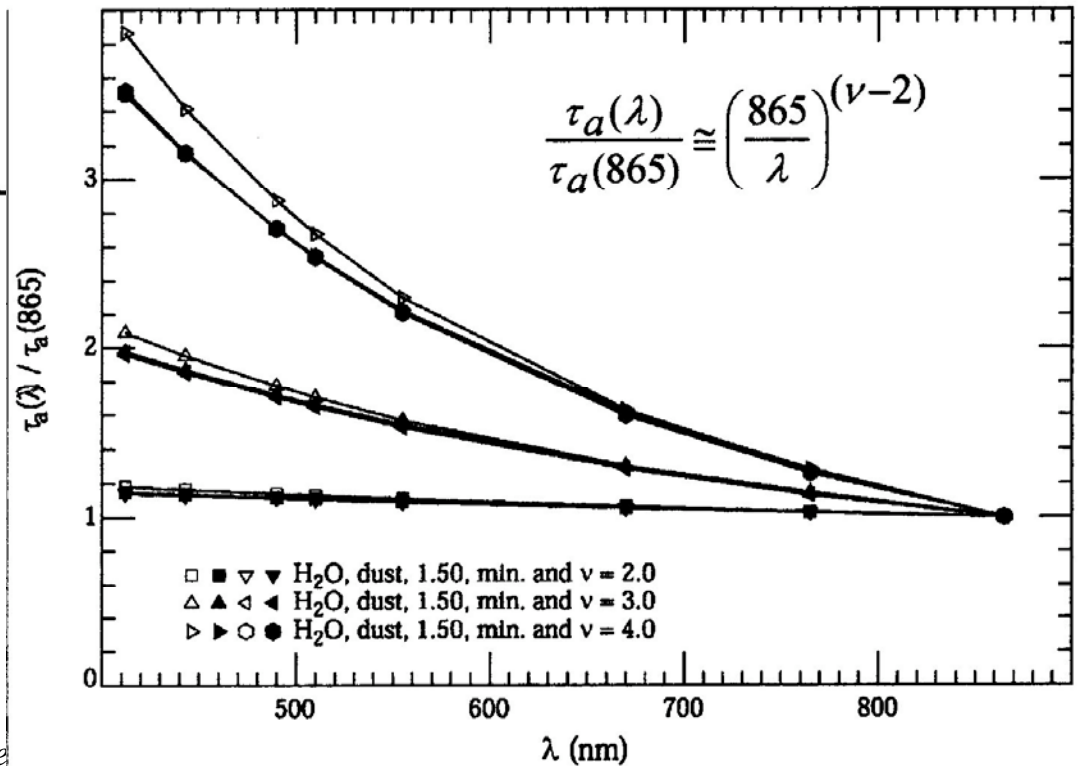
Total number: $N = \int_0^{\infty} \frac{dn}{dD} dD$

Haze C Models:

$$\begin{aligned} \frac{dn}{dD} &= K, & D_0 < D < D_1 \\ &= K \left(\frac{D_1}{D} \right)^{(\nu+1)}, & D_1 < D < D_2 \\ &= 0, & D > D_2 \end{aligned}$$



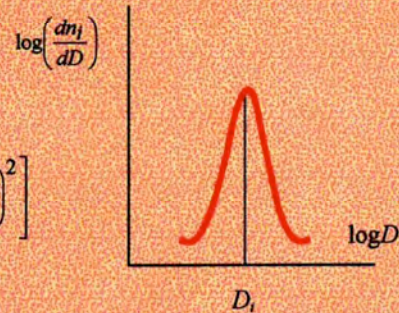
Haze C Aerosol Model



Shettle and Fenn Models:

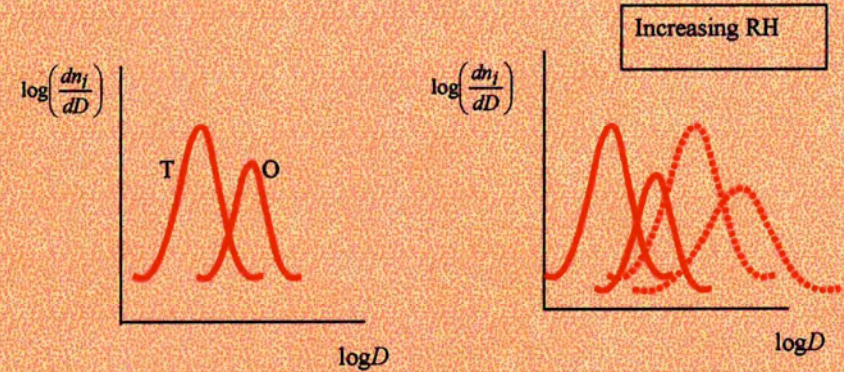
$$\frac{dn}{dD} = \sum_{i=1}^2 \frac{dn_i}{dD}$$

$$\frac{dn_i(D)}{dD} = \frac{N_i}{\log_e(10)\sqrt{2\pi}\sigma_i} \exp\left[-\frac{1}{2}\left(\frac{\log_{10}(D/D_i)}{\sigma_i}\right)^2\right]$$



Typical Shettle and Fenn Model

Two components. As RH increases, the components shift to larger size, and the "width" of the distribution changes.



Shettle and Fenn (1979) Aerosol Models

Shettle and Fenn particle properties

Small component:

- 70% water soluble
- 30% mineral

Large Component:

- Sea Salt

At 550 nm

Component	Size	$m(RH=0)$	$m(RH=98\%)$	$\omega_0(RH=0)$	$\omega_0(RH=98\%)$
Trop. (T)	Small	1.53-0.0066i	1.37-0.0012i	0.959	0.989
Oceanic (O)	Large	1.50	1.35	1	1

M: 99.0% T and 1% O by number

C: 99.5% T and 0.5% O by number

T: 100% T and 0% O by number

Aerosol Optical Property

The complex refractive index of aerosol particles is:

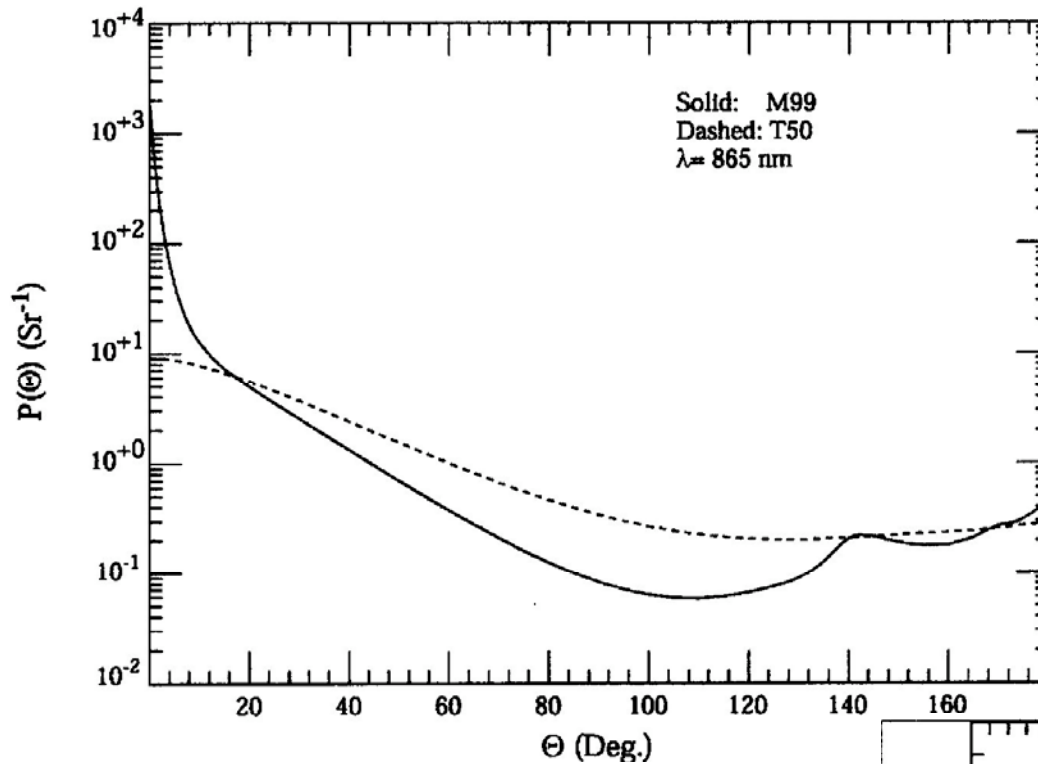
$$m = m_r - i m_i,$$

m_r is the real refractive index, e.g., ~ 1.33 for water in the visible, and m_i the index related to particle absorption.

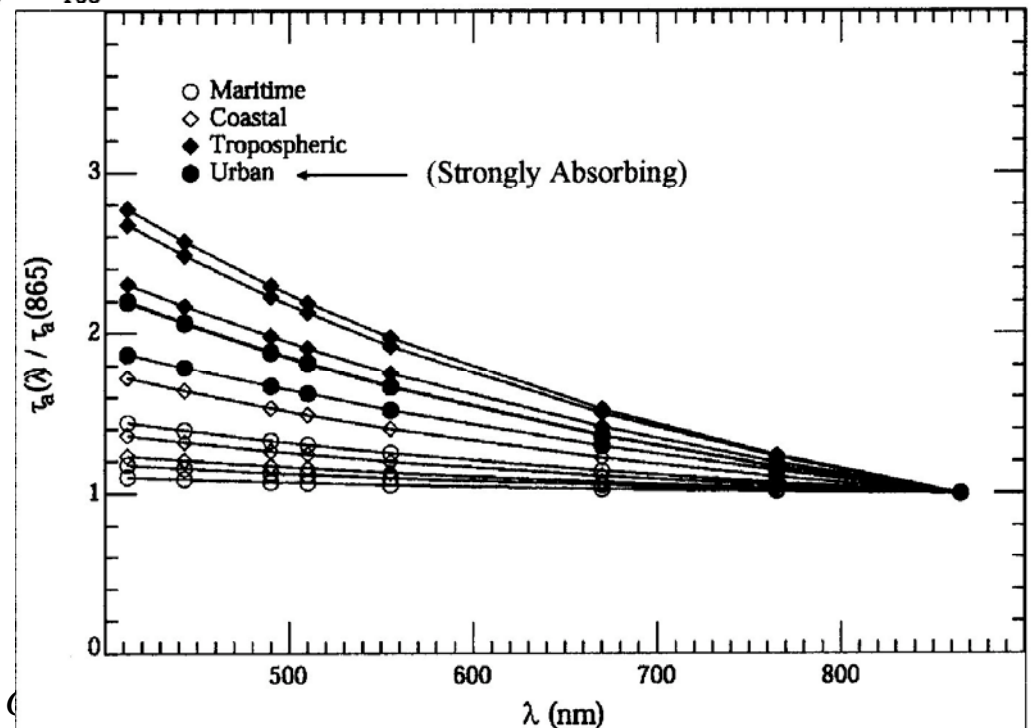
- Aerosol particles can be characterized with particle size distribution and particle refractive index.
- Given the size distribution, refractive index of the individual particles, and assuming that the particles are spherical, aerosol optical properties can be computed using the Mie theory. These properties are:
 - The scattering phase function $P(\Theta)$
 - The single scattering albedo ω_0
 - The extinction coefficient c

Shettle and Fenn (1979) Aerosol Models

Aerosol Phase Function



Aerosol Optical Thickness



The Ångström Exponent α (**particle size**)

$$\frac{\tau_a(\lambda)}{\tau_a(\lambda_0)} = \left(\frac{\lambda_0}{\lambda} \right)^{\alpha(\lambda, \lambda_0)}$$

$$\alpha(\lambda, \lambda_0) = \ln \left(\frac{\tau_a(\lambda)}{\tau_a(\lambda_0)} \right) / \ln \left(\frac{\lambda_0}{\lambda} \right)$$

Small aerosol particle size has large α value, while large particle has small α value.

The Asymmetry Parameter g (**phase function**)

$$g = \frac{1}{2} \int_0^\pi \cos \Theta P(\Theta) \sin \Theta d\Theta = \frac{1}{2} \int_{-1}^1 \mu P(\mu) d\mu$$

The value of g ranges between -1 for entirely backscattered light to +1 for entirely forward-scattered light. Generally, $g = 0$ indicates scattering direction evenly distributed between forward and backward directions, e.g., isotropic scattering.

Aerosol Models

Shettle and Fenn (1979) aerosol models used (12 models):

Oceanic with relative humidity (RH) of 99%

Maritime with RH of 50%, 70%, 90%, and 99%

Coastal with RH of 50%, 70%, 90%, and 99%

Tropospheric with RH of 50%, 90%, and 99%

Other models from **AERONET** measurements (Ahmad et al., 2010)

Characteristics of the Aerosol Models

Aerosol Model	Single Scattering Albedo $\omega_a(865)$	Asymmetry Parameter g	Ångström Exponent $\alpha(510, 865)$
Oceanic [†]	1.0	0.724-0.840	-0.087~ -0.016
Maritime [†]	0.982-0.999	0.690-0.824	0.09-0.50
Coastal ^{††}	0.976-0.998	0.682-0.814	0.23-0.76
Tropospheric [†]	0.930-0.993	0.603-0.769	1.19-1.53
Urban [†]	0.603-0.942	0.634-0.778	0.85-1.14
Dust ^{†††}	0.836-0.994	0.662-0.763	0.29-0.36

[†] Shettle and Fenn (1979) aerosol models. ^{††} Gordon and Wang (1994)

^{†††} Shettle (1984) and Moulin et al. (2001).

Strongly-absorbing aerosols

Radiative Transfer

4. Radiative Transfer

- Radiative Transfer Equation (RTE)
- Successive-order-of-scattering method
- Single-scattering approximation

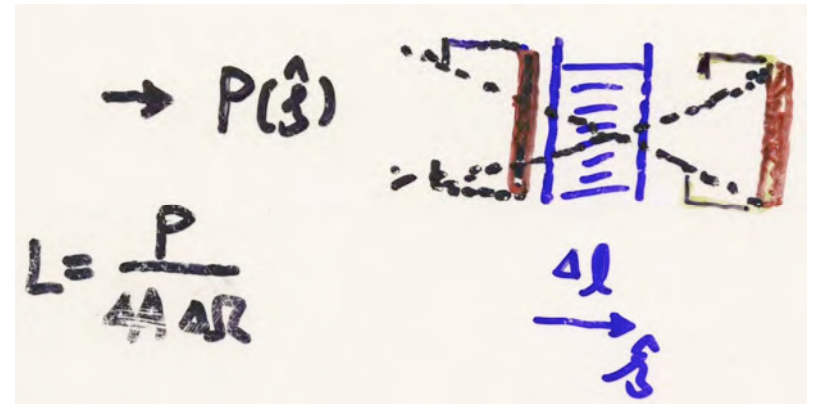


The Radiative Transfer Equation (RTE)

The RTE is simply an accounting for the changes in radiance along a path.

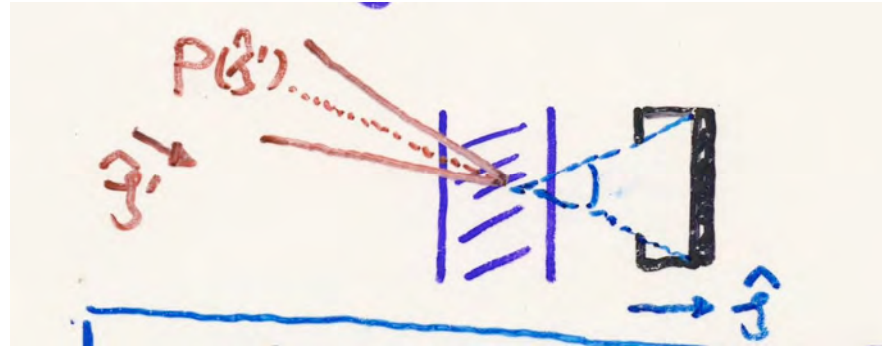
First, attenuation produces a loss:

$$L + \Delta L = \frac{P + \Delta P}{\Delta A \Delta \Omega} = \frac{P(1 - c\Delta l)}{\Delta A \Delta \Omega}$$



$$\frac{dL(\hat{\xi})}{dl} = -c L(\hat{\xi})$$

Second, scattering produces a gain:

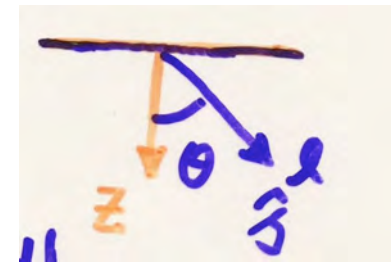


$$\frac{dL(\hat{\xi})}{dl} = \int_{\Omega'} \beta(\hat{\xi}' \rightarrow \hat{\xi}) L(\hat{\xi}') d\Omega(\hat{\xi}')$$

The RTE:

$$\frac{dL(\hat{\xi})}{dl} = -cL(\hat{\xi}) + \int_{\Omega'} \beta(\hat{\xi}' \rightarrow \hat{\xi}) L(\hat{\xi}') d\Omega(\hat{\xi}')$$

For the atmosphere-ocean system:



$$\begin{aligned} \cos \theta \frac{dL(z, \theta, \phi)}{dz} = & -c(z) L(z, \theta, \phi) \\ & + \int_{\Omega'} \beta(z, \theta', \phi' \rightarrow \theta, \phi) L(z, \theta', \phi') d\Omega' \end{aligned}$$

The RTE:

$$\cos \theta \frac{dL(z, \theta, \phi)}{dz} = -c(z) L(z, \theta, \phi) + \int_{\Omega'} \beta(z, \theta', \phi' \rightarrow \theta, \phi) L(z, \theta', \phi') d\Omega'$$

Can be written as:

$$\cos \theta \frac{dL(z, \theta, \phi)}{c(z) dz} = -L(z, \theta, \phi) + \omega_0(z) \int_{\Omega'} P(z, \theta', \phi' \rightarrow \theta, \phi) L(z, \theta', \phi') d\Omega'$$

$$\cos \theta \frac{dL(\tau, \theta, \phi)}{d\tau} = -L(\tau, \theta, \phi) + \omega_0(\tau) \int_{\Omega'} P(\tau, \theta', \phi' \rightarrow \theta, \phi) L(\tau, \theta', \phi') d\Omega'$$

where $\tau = \int_0^Z c(z') dz'$ is the optical thickness

Successive-order-of-scattering method

See section from Wang (1991).

Wang, M. (1991), “Atmospheric Correction of the Second Generation of Ocean Color Sensors,” *Ph.D. Dissertation*, 135 pp., University of Miami, Coral Gables, Florida, USA.

Single-Scattering Approximation

See section from Wang (1991).

Wang, M. (1991), “Atmospheric Correction of the Second Generation of Ocean Color Sensors,” *Ph.D. Dissertation*, 135 pp., University of Miami, Coral Gables, Florida, USA.

$$\rho_{as}(\lambda) = \frac{\omega_0(\lambda)\tau(\lambda)}{4\cos\theta\cos\theta_0} \left[P(\Theta_-, \lambda) + \left(r(\theta) + r(\theta_0) \right) P(\Theta_+, \lambda) \right]$$
$$\propto \omega_0(\lambda)\tau(\lambda)P(\Theta_-, \lambda)$$

Fresnel reflectivity of the surface



Aerosol reflectance (radiance)

$$\propto \omega_a(\lambda) \tau_a(\lambda) P_a(\Theta_-, \lambda)$$

For non- and weakly absorbing
aerosols, aerosol reflectance:

$$\propto \tau_a(\lambda) P_a(\Theta_-, \lambda)$$



AOT can be routinely measured, but
NOT Phase Function

Aerosol Single-Scattering Epsilon

$$\begin{aligned}\varepsilon(\lambda, \lambda_0) &= \frac{\rho_{as}(\lambda)}{\rho_{as}(\lambda_0)} \\ &= \frac{\omega_a(\lambda)\tau_a(\lambda)\left[P_a(\Theta_-, \lambda) + (r(\theta) + r(\theta_0))P_a(\Theta_+, \lambda)\right]}{\omega_a(\lambda_0)\tau_a(\lambda_0)\left[P_a(\Theta_-, \lambda_0) + (r(\theta) + r(\theta_0))P_a(\Theta_+, \lambda_0)\right]}\end{aligned}$$

Spectral variation of aerosol reflectance

Characteristics of the Aerosol Models

Aerosol Model	Single Scattering Albedo $\omega_a(865)$	Asymmetry Parameter g	Ångström Exponent $\alpha(510, 865)$
Oceanic [†]	1.0	0.724-0.840	-0.087~ -0.016
Maritime [†]	0.982-0.999	0.690-0.824	0.09-0.50
Coastal ^{††}	0.976-0.998	0.682-0.814	0.23-0.76
Tropospheric [†]	0.930-0.993	0.603-0.769	1.19-1.53
Urban [†]	0.603-0.942	0.634-0.778	0.85-1.14
Dust ^{†††}	0.836-0.994	0.662-0.763	0.29-0.36

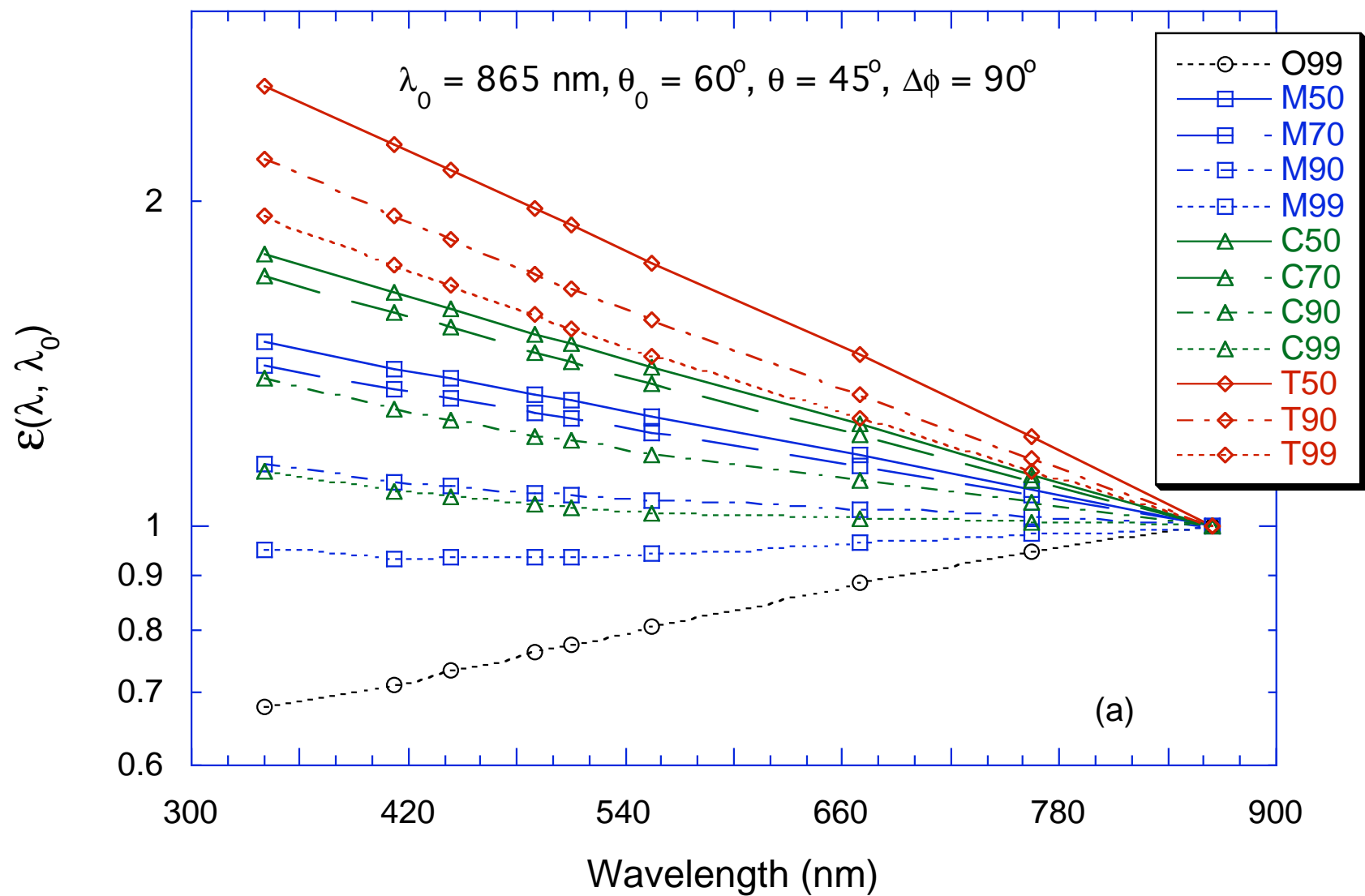
[†] Shettle and Fenn (1979) aerosol models. ^{††} Gordon and Wang (1994)

^{†††} Shettle (1984) and Moulin et al. (2001).

Strongly-absorbing aerosols

Non- and weakly-absorbing aerosols

Aerosol Single-Scattering Epsilon ($\lambda_0 = 865 \text{ nm}$)



Epsilon and Aerosol Reflectance

$$\varepsilon(\lambda, \lambda_0) = \frac{\rho_{as}(\lambda)}{\rho_{as}(\lambda_0)} \approx \exp\{c(\lambda_0 - \lambda)\}$$

$\varepsilon(\lambda, \lambda_0)$ can be computed from two bands (e.g., NIR bands) $\rho_{as}(\lambda)$. Thus, $\rho_{as}(\lambda)$ values in other wavelengths (e.g., visible bands) can be estimated:

$$\rho_{as}(\lambda) = \varepsilon(\lambda, \lambda_0) \times \rho_{as}(\lambda_0)$$

A simple **atmospheric correction** (aerosol correction) scheme (Wang and Gordon, 1994)--Single-scattering approximation.

Questions?

Radiance \propto ?